

HARPER'S BAZAAR

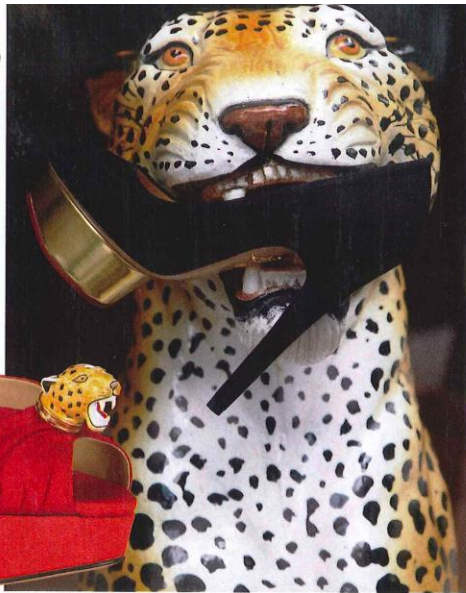
05/2012

"TOMMY SURFS"

Fashion NEWS



Charlotte Olympia shoe, \$1,395. Similar styles available at forward.com.



MY PRIZE POSSESSION



CHARLOTTE OLYMPIA DELLAL

Accessories designer Charlotte Olympia Dellal says her favorite thing is "Bruce, an Art Deco ceramic leopard given to my husband by his grandmother. Bruce triggered my love for leopard and has since become our London store mascot. He appears from time to time in our campaign imagery and has a few designs named after him!" Dellal fashioned the shoe above to feature her beloved big cat's visage, and she has also used the chic feline's head as the clasp for one of her covetable clutches. C.W.



Tommy Hilfiger Surf Shack clutch, \$68. 212-223-1824.



Lola Montes Schnabel for Tommy Hilfiger in collaboration with Art Production Fund surfboard, \$2,000

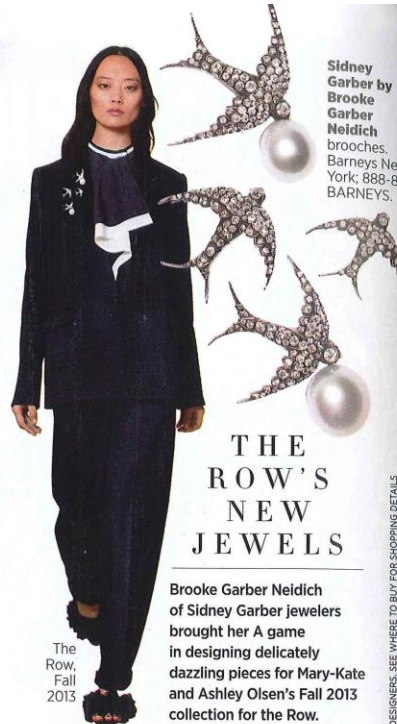


Tommy Hilfiger Surf Shack bikini, \$128



Tommy Hilfiger Surf Shack anorak, \$128

TOMMY SURFS Tommy Hilfiger is looking seaward for summer with Surf Shack, a capsule collection of swim- and beachwear that puts us in a vacation state of mind. A highlight is a series of surfboards featuring images by artists like Lola Montes Schnabel (shown above) and Richard Phillips. Surf's up!



Sidney Garber by Brooke Garber Neidich brooches. Barneys New York; 888-8-BARNEYS.

THE ROW'S NEW JEWELS

Brooke Garber Neidich of Sidney Garber jewelers brought her A game in designing delicately dazzling pieces for Mary-Kate and Ashley Olsen's Fall 2013 collection for the Row.

The Row, Fall 2013

Jonathan Simkhai, Spring 2013



NEW DESIGNER: JONATHAN SIMKHA The New York native launched his namesake line in 2010, and right on time—his recent collections featured minimal chic shorts and separates that are exactly what we want to wear this season. ■

CLOCKWISE FROM TOP: CENTER, COURTESY CHARLOTTE OLYMPIA; THE ROW AND JONATHAN SIMKHA; DAVE M. BENNETT/GETTY IMAGES; STILL LIFE, COURTESY THE DESIGNERS; SEE WHERE TO BUY FOR SHOPPING DETAILS